

Assembly & Installation Instructions

A487

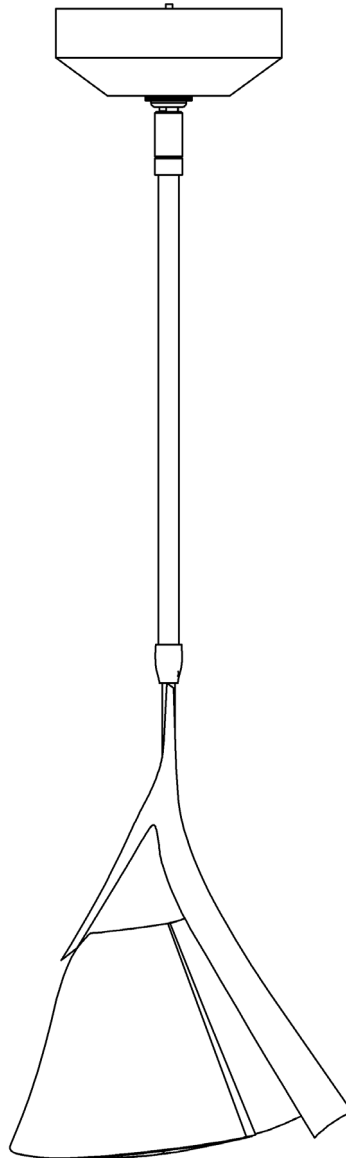
Mobius Kitchen Pendant 139845D

Page 1 of 3

CAUTION: FAILURE TO INSTALL THIS FIXTURE PROPERLY MAY RESULT IN SERIOUS PERSONAL INJURY OR DEATH AND PROPERTY DAMAGE. We recommend installation by a licensed electrician. This product must be installed in accordance with applicable installation code(s), by a person familiar with the construction and operation of the product and the hazards involved.*

Caution: Do not exceed maximum wattage noted on fixture. Use only recommended bulbs with fixture.

Please Note: After installation extra hardware and accessories are possible due to our kits are used on multiple products and options.



HUBBARDTON FORGE.

Modern American Blacksmiths | Fine, Hand-Crafted Lighting
Castleton, Vermont USA | HUBBARDTONFORGE.COM

37231

Component Parts

A	Fixture
B	Canopy
C	Canopy Ring
D	Fixture Pipe
E	Canopy Pipe
F	Clutch
G	Plastic Sleeve
H	Set Screw
I	Fixture Bracket
J	Crossbar
K	Ground Screw
L	Cupped Washer
M	Driver
N	#8 Screws (2)

Assembly & Installation Instructions

A487

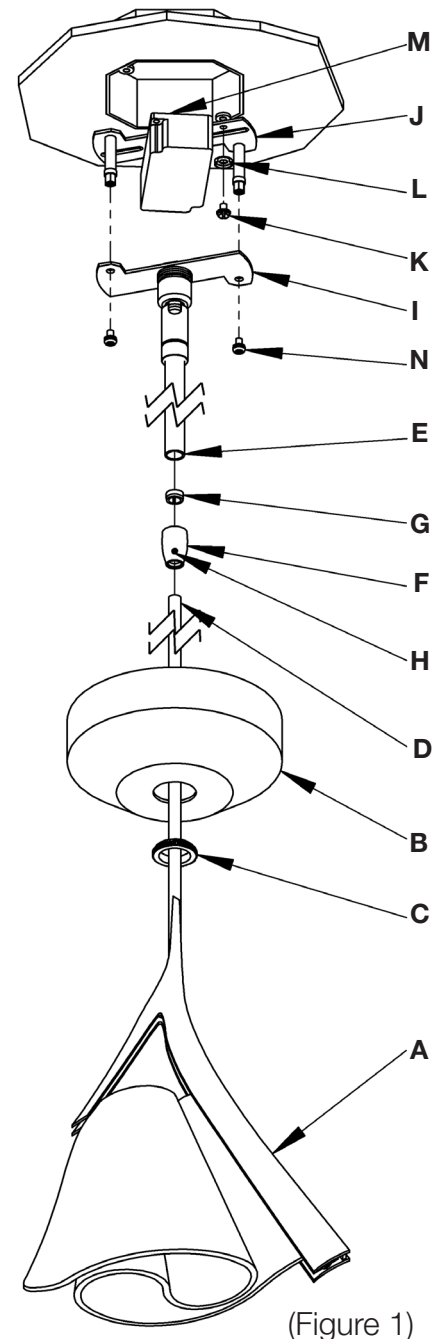
Mobius Kitchen Pendant 139845D

Page 3 of 3

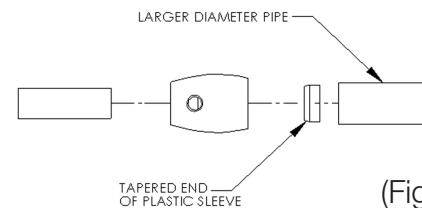
Prepare Fixture (Figures 1 & 2)

CAUTION: BE SURE POWER IS OFF AT THE MAIN BREAKER BOX PRIOR TO INSTALLATION.

- Carefully unpack the fixture from the carton
- Carefully slide canopy ring (C) and canopy (B) down over fixture pipe (D) until they rest on the fixture (A). Make sure smaller diameter side of canopy ring (C) is oriented up toward the canopy (B).
- Slip wires from the fixture pipe (D) through the canopy pipe (E).
- Unscrew the clutch (F) from the canopy pipe (E); slide it across the wires and onto the fixture pipe (D). Follow this with the plastic sleeve (G), oriented so the tapered end nests in the clutch (F). (Figure 2)
- Important:** To ensure full connection strength, be sure the tapered end of the plastic clutch sleeve is oriented toward the clutch when assembled and securely tighten set screw (Figure 2).
- Slide the canopy pipe (E) on to fixture pipe (D) as far as necessary to give you the total length of the fixture which you desire. Be careful not to scratch the pipe surfaces and to pull excess wire up through the canopy pipe (E). There must be a minimum 1-1/2" of inner pipe inside the outer pipe. Hand-tighten the clutch (F) to temporarily hold this adjustment. Tighten the set screw (H) firmly with hex wrench provided.
- Using two machine screws (not provided), fasten the crossbar (J) to the electric box.
Note: A new electric box comes with screws. When replacing a fixture, retain the existing screws for use with the new fixture.
- Using #8 screws (N) that are shipped in kit bag, fasten fixture bracket (I) to crossbar (J) taking caution not to pinch any wires.
- Connect black driver (M) wire with connector attached to black fixture wire. Connect red driver (M) wire with connector attached to grey fixture wire. Attach a pigtail lead using ground screw (K) and cupped washer (L).
- Using suitable wire connectors (not provided), connect driver (J) wires to supply wires (white to white supply, black to black supply). Raise canopy (B) close to ceiling and connect all ground wires (bare copper or green to bare copper or green). Push wires back into outlet box.
Caution: Make sure wire connectors are twisted on securely, and no bare wire is exposed.
- Slide canopy (B) against ceiling, and secure with canopy ring (C).
- Restore electricity at main breaker.



(Figure 1)



(Figure 2)

If you need further assistance, or find that you are missing any parts, please contact the dealer from which you purchased this product. We hope you enjoy your fixture!

*Hubbardton Forge will not be liable for injury or damage caused by improper installation, lamping or use of this fixture.